

**Professional solutions**



**FB Filter Bau** GmbH



**We ...**



*have been convincing our customers with our work, quality and services in the field of dedusting technology for more than 25 years.*

*Our experience with the most varied of dust problems is the solution for your specific tasks which you have given us. Thanks to our product range with a dedusting potential ranging from 1,000 to more than 250,000 m<sup>3</sup> and a filter surface from 24 to more than 2,000 m<sup>2</sup>, we are in the position to be able to realise the individual adaptation to meet your requirements. With the most state-of-the-art production technologies, we can guarantee you excellent quality on site. All accessories have been tested and are guaranteed by us.*

### **Consultation, planning, support**

*Assemblies, instructions and trainings, commissionings, regular inspections and maintenance works belong to our scope of services as well as measurement technology, electro technology and the sale of spare parts. Our services include comprehensive, quick and reliable support of the entire dedusting installation and its peripheral devices. Regularly trained and technically-qualified employees ensure the optimisation of operating costs for our products, thanks to their long-time experience.*

### **Assembly**

*We will be on site as quick as possible - to save time and costs.*

### **Maintenance**

*On the basis of regular inspections and maintenance being carried out on your dedusting installation, you ensure continuous and fault-free operation and avoid damages and unscheduled downtimes. Imminent malfunctions will be identified during the systematical inspection, thus avoiding expensive repairs and downtimes. We will, of course, support you with your entire dedusting installation and its peripheral devices.*

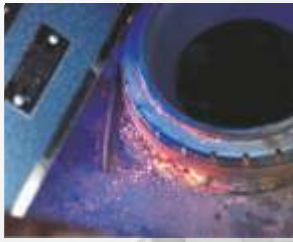
### **Service agreement**

*Systematical installation support: The service agreement cost-effective and comfortable: Make use of our advanced service package for your dedusting installation. You will receive the services of a service technician at special conditions upon conclusion of a service agreement. Thus, you decrease your maintenance and repair costs. All maintenance works will be performed quickly and at reasonable prices. Benefit from cost transparency, we provide you with proof of where every penny goes.*





# Complete solutions



separators

discharge devices

top-mounted filters

distance mats

double pendulum flap

throttles

emission meters

spare parts for commercially available filter types

filter hoses

filter pressure controls

filter cartridges

filter supporting cages

filter bags

chimneys

compressors

coolers

leakage detection systems

membrane valves

assembly

pipeline systems

sound protection

feeders

screw conveyors

protective clothing

tech. realisation

monitoring devices for the clean gas

fans

valve control devices

maintenances

rotary gate valve



extraction and transport  
of grey cast iron chips on  
metal processing machines



dedusting  
crushing and screening plant  
130.000 Bm<sup>3</sup>/h



dedusting  
of grey cast iron chips



modern pressurised-air cleaned  
FB oval hose filter



filler reduction



dedusting  
crushing and screening plant



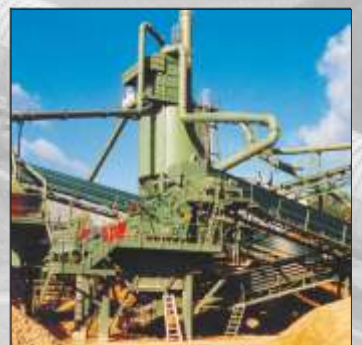
dedusting of  
rotary kiln during  
manufacture of perlite  
(stainless steel)



extraction of  
brush machines  
during the coating  
of pipelines



dedusting crusher



dedusting crusher





dedusting  
primary crusher



dedusting of an  
asphalt mixing plant



dedusting of a  
dry drum during manufacture  
of blasting material



dedusting  
Maerz kiln  
(lime plant)



dedusting  
crushing and screening plant



dedusting of a  
lime toploader kiln



dedusting of  
mobile and semi-mobile  
crushing and screening plants



top-mounted filter



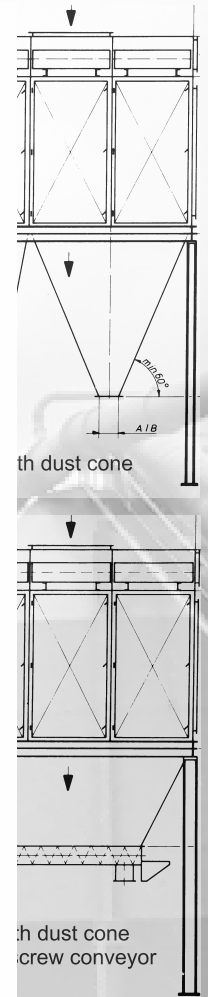
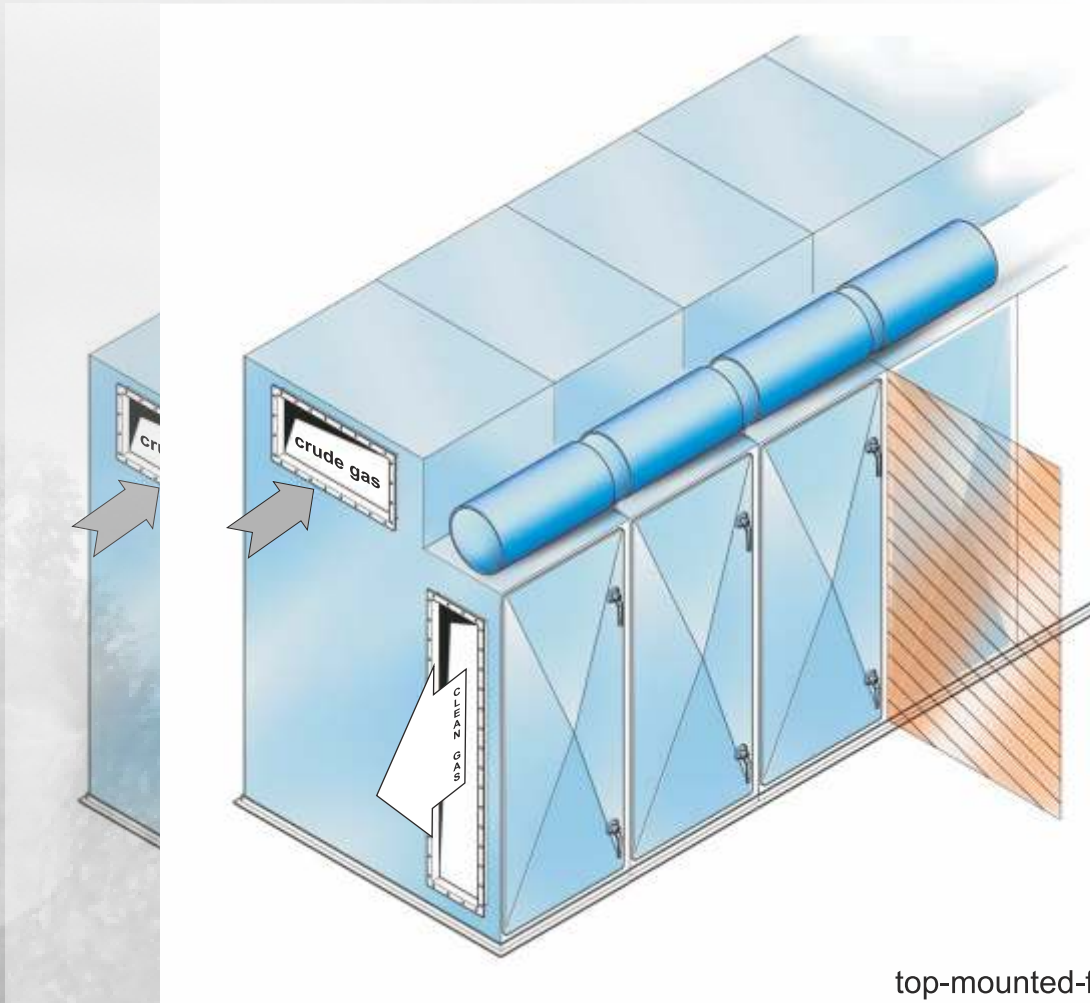
installation of a  
dedusting system  
on top of a silo



mobile dedusting plant



# FSD series



top-mounted-filter

*The crude gas flows from the sides or from top into the filter housing. This housing is sub-divided by a vertical perforated wall into a dust and a clean gas section.*

*The crude gases are filtered on the outer surfaces of the oval filter hoses made of highly-efficient needle felt.*

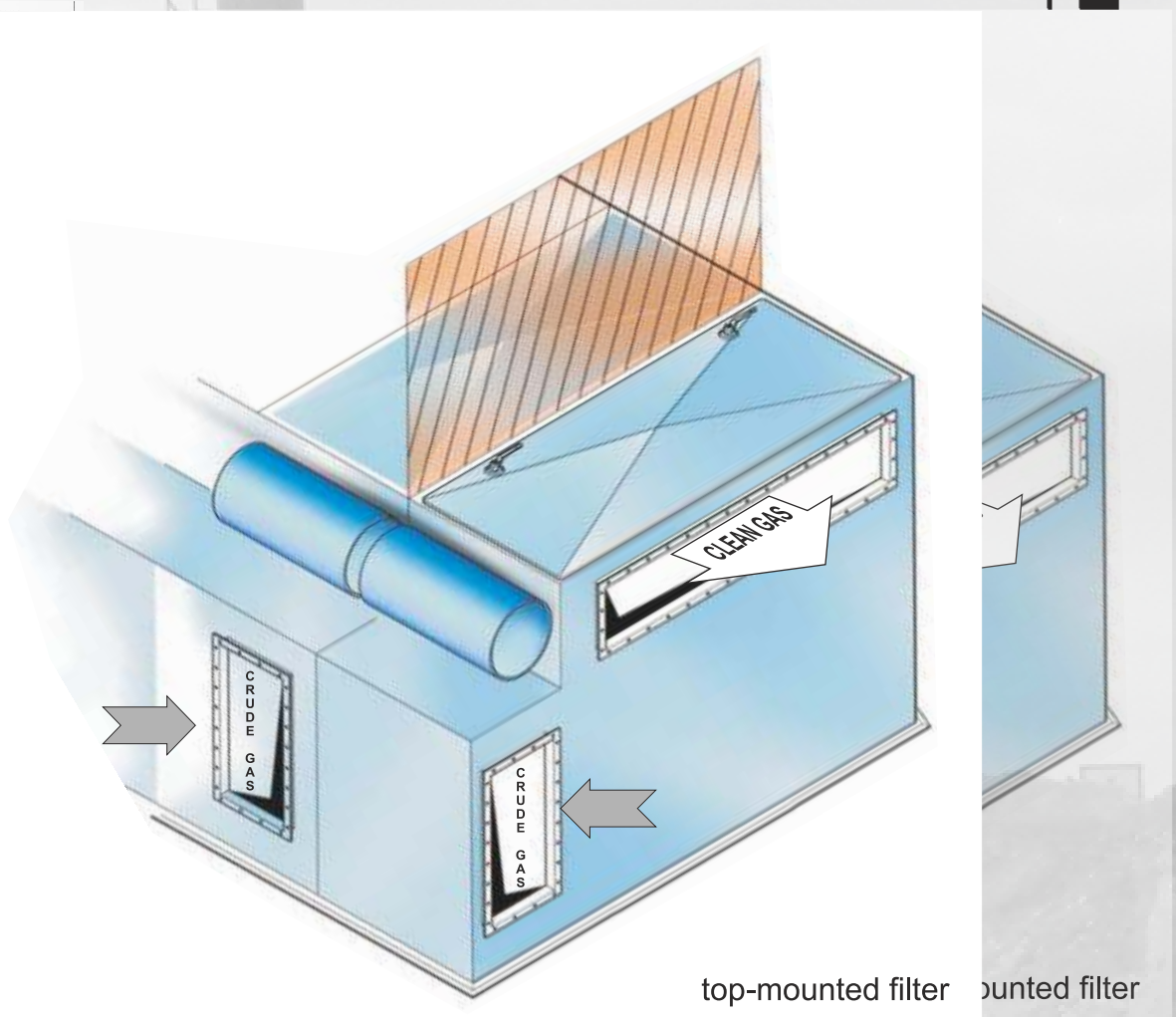
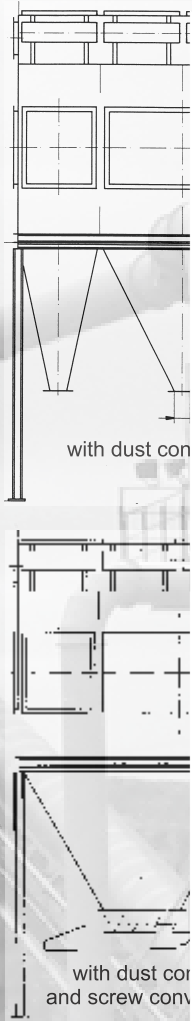
*The oval filter hoses installed on supporting cages are installed and de-installed from the clean gas side.*

*Regeneration is carried out fully automatic by means of pressurised air.*





# FWD series



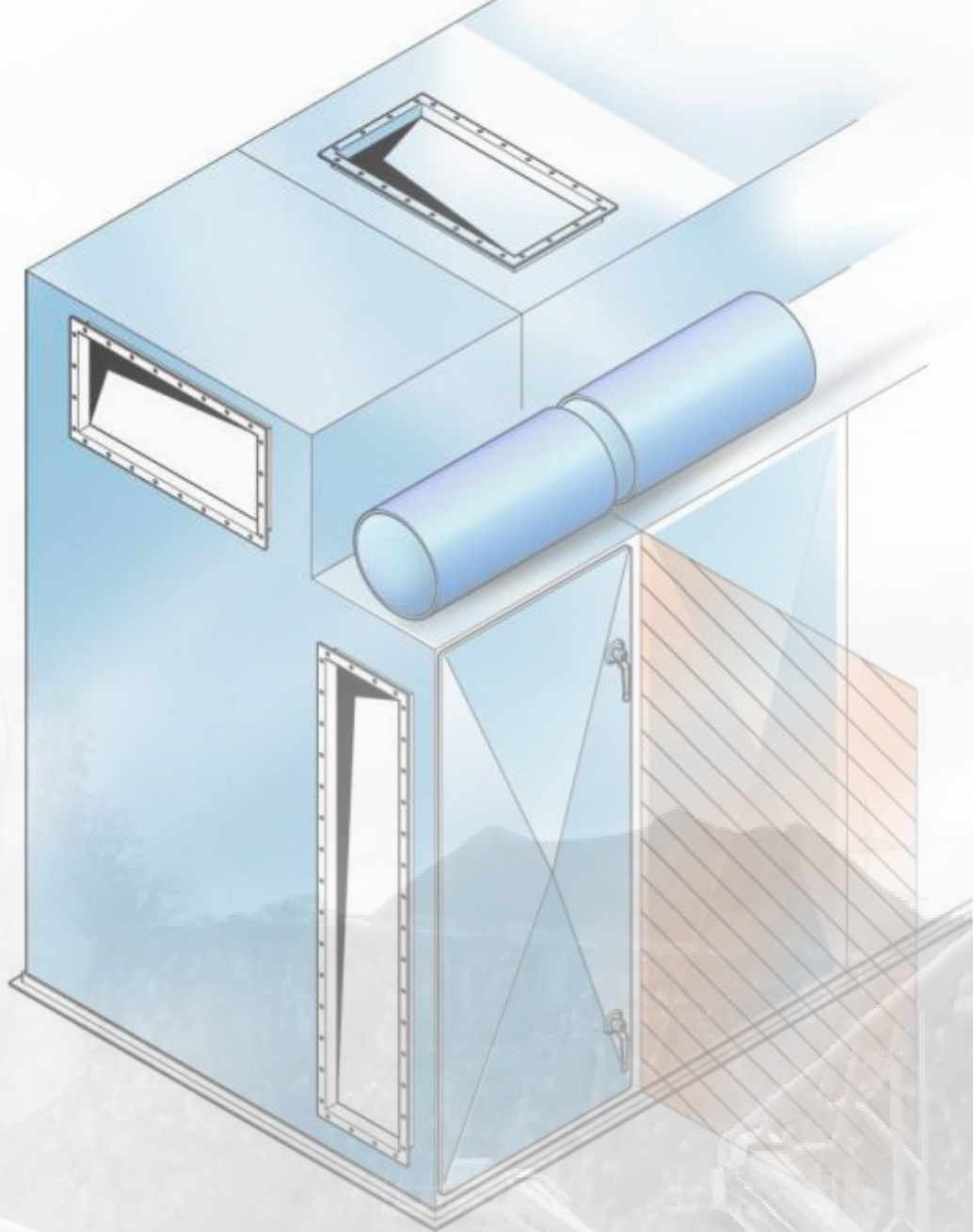
*The crude gas flows from the sides into the filter housing and is distributed by means of impact angles. The filter housing is separated by a horizontal perforated wall into a dust and a clean gas area.*

*The crude gases are filtered on the outer surfaces of the oval filter hoses made of highly-efficient needle felt.*

*The oval filter hoses installed on supporting cages are installed and de-installed from the clean gas side.*

*Regeneration is carried out fully automatic by means of pressurised air.*





FB Filter Bau GmbH • Gottlieb-Daimler-Str. 10 • D-31552 Rodenberg

Infoline +49-700-FILTERBAU

Tel. + 49 - 57 23 - 98 99-0 • Fax + 49 - 57 23 - 98 99-29

[www.filterbau.de](http://www.filterbau.de) • email: [info@filterbau.de](mailto:info@filterbau.de)